

VANCOUVER SCHOOL INDEX

ELEMENTARY SCHOOLS		SECONDARY SCHOOLS	
SCHOOL NAME	GRID	SCHOOL NAME	GRID
BAYVIEW, (Bayview Community Elementary)	F5	BRITANNIA, (Britannia Community Secondary)	G9
BEACONSFIELD, (Lord Beconsfield Elementary)	G11	BYNG, (Lord Byng Secondary)	F4
BEGBIE, (Sir Matthew Begbie Elementary)	F11	MCKECHNIE, (Dr R.E. McKechnie Elementary)	I6
BRITANNIA, (Britannia Community Elementary)	F10	MORBERY, (Walter Morbery Elementary)	I9
BROCK, (General Brock Elementary)	H8	MOUNT PLEASANT, (Mount Pleasant Elementary)	F10
BRUCE, (Graham Bruce Community Elementary)	H12	NELSON, (Lord Nelson Elementary)	F10
CARLETON, (Sir Guy Carleton Community Elementary)	H11	NGATINGALE, (Florence Nightingale Elementary)	F9
CARNARVON, (Carnarvon Community Elementary)	G5	NOOTKA, (Nootka Community Elementary)	G11
CARR, (Emily Carr Elementary)	G7	NORMA ROSE POINT SCHOOL, (Norma Rose Point School)	F2
CAVELL, (Edith Cavell Elementary)	G8	NORQUAY, (John Norquay Elementary)	H11
CHAMPLAIN HEIGHTS, (Champlain Heights Community Elementary)	G9	OPPENHEIMER, (David Oppenheimer Elementary)	F10
CHAMPLAIN HEIGHTS, (Champlain Heights Annex)	I12	OSLER, (Sir William Osler Elementary)	H7
COLLINGWOOD, (Collingwood Neighbourhood School)	H12	QUEEN ALEXANDRA, (Queen Alexandra Elementary)	F9
COOK, (Captain James Cook Elementary)	F11	QUEEN ELIZABETH, (Queen Elizabeth Elementary)	G4
CROSSTOWN, (Crosstown Elementary)	E8	QUEEN MARY, (Queen Mary Elementary)	F4
CUNNINGHAM, (Cunningham Elementary)	H10	QUEEN VICTORIA, (Queen Victoria Annex)	F10
DICKENS, (Charles Dickens Elementary)	G9	QUESNEL, (Ecole Jules Quesnel Elementary)	G4
DOUGLAS, (Sir James Douglas Elementary)	I10	QUILCHENA, (Quilchena Elementary)	H6
DOUGLAS, (Sir James Douglas Annex)	I10	RENFREW, (Renfrew Community Elementary)	G11
ELSIE ROY, (Elsie Roy Elementary)	F7	ROBERTS, (Lord Roberts Elementary)	H1
FALSE CREEK, (False Creek Elementary)	F7	ROBERTS, (Lord Roberts Annex)	E7
FLEMING, (Sir Sandford Fleming Elementary)	H10	SECORD, (Ecole Laura Secord Elementary)	F10
FRANKLIN, (Sir John Franklin Community)	E12	SELKIRK, (Lord Selkirk Elementary)	G10
FRASER, (Simon Fraser Elementary)	G8	SELKIRK, (Lord Selkirk Annex)	G10
GORDON, (General Gordon Elementary)	F5	SEXSMITH, (JW Sexsmith Community Elementary)	I8
GRANDVIEW, (Grandview Elementary)	F10	SEYMOUR, (Admiral Seymour Elementary)	E9
GRENFELL, (Sir Wilfred Grenfell Community School)	G11	SHAUGHNESSY, (Shaughnessy Elementary)	G6
HASTINGS, (Hastings Community Elementary)	E11	SOUTHLANDS, (Southlands Elementary)	H4
HENDERSON, (John Henderson Elementary)	I9	STRATHCONA, (Lord Strathcona Community Elementary)	E9
HUDSON, (Henry Hudson Elementary)	F6	TECUMSEH, (Tecumseh Elementary)	H10
JAMIESON, (Dr Annie B. Jamieson Elementary)	H8	TECUMSEH, (Tecumseh Annex)	H10
KERRSDALE, (Kerrisdale Elementary)	H5	TENNYSON, (Lord Tennyson Elementary)	F6
KERRSDALE, (Kerrisdale Annex)	H5	THUNDERBIRD, (Thunderbird Elementary)	F12
KINGSFORD SMITH, (Sir Charles Kingsford-Smith Elementary)	I10	TILLICUM, (Tillicum Community)	E10
KITCHENER, (Lord Kitchener Elementary)	G5	TRAFALGAR, (Trafalgar Elementary)	G6
LAURIER, (Sir Wilfrid Laurier Elementary)	I9	TROUDAU, (Pierre Elliott Trudeau Elementary)	I10
L'ECOLE BILINGUE, (L'Ecole Bilingue Elementary)	F7	TYEE, (Tyee Elementary)	G10
LIVINGSTONE, (David Livingstone Elementary)	G9	UNIVERSITY HILL, (University Hill Elementary)	F2
LLOYD GEORGE, (David Lloyd George Elementary)	I7	VAN HORNE, (Sir William Van Horne Elementary)	H8
LORD, (Dr A.R. Lord Elementary)	E11	WAVERLEY, (Waverley Elementary)	H10
MACCORKINDALE, (Dr H.N. MacCorkindale Elem)	H12	WEIR, (Dr George M. Weir Elementary)	G8
MACKENZIE, (Sir Alexander Mackenzie Elementary)	H9	WOLFE, (General Wolfe Elementary)	H11
MAPLE GROVE, (Maple Grove Elementary)	H6	XPEY	E10
MAQUINNA, (Chief Maquinna Elementary)	F11		

DISTRICT SERVICES	
Garibaldi Learning Services	F11
Gathering Place A.E.C.	G10
Newcomers Welcome Centre	I9
South Hill A.E.C.	H9
VSU Education Centre	F7
VSU Grounds	H11
VSU Workshop	F9
Vancouver Learning Network	H9
Waverley Annex - Learning Hub	H11

**INDIGENOUS NAMES FOR SCHOOLS**  
With The Vancouver Board Of Education

We would like to acknowledge that the Vancouver School Board and all of our Elementary and Secondary Schools live, work, and learn on the ancestral, unceded traditional lands of x'məḡk'aḡam (Musqueam), səl̓wəṭ'əḡam (Squamish) & səḡwəḡ'əḡam (Tsilil-Waututh) Nations.

**Grandview**  
祖uqinək'uuh Elementary School  
Meaning: Grand View  
Language: Barkley Sound Dialect, the ancestral language of the Nuuzahut (Nuu-Chah-nulth) people.

**Point Grey Secondary**  
staywə:ḡ  
Meaning: Power from the North  
Language: haŋqəmiḡan, the ancestral language of the x'məḡk'aḡam (Musqueam) and səl̓wəṭ'əḡam (Tsilil-Waututh) people.

**Crosstown**  
səx'wəq'əḡat  
Meaning: The place from which one can catch the tide  
Language: haŋqəmiḡan, the ancestral language of the x'məḡk'aḡam (Musqueam) and səl̓wəṭ'əḡam (Tsilil-Waututh) people.

**Thunderbird**  
səx'əw'a7əs  
Meaning: Thunderbird  
Language: haŋqəmiḡan, the ancestral language of the x'məḡk'aḡam (Musqueam) and səl̓wəṭ'əḡam (Tsilil-Waututh) people.

**xpey**  
Meaning: Cedar  
Language: haŋqəmiḡan, the ancestral language of the x'məḡk'aḡam (Musqueam) and səl̓wəṭ'əḡam (Tsilil-Waututh) people.

**VSB VANCOUVER SCHOOL BOARD**  
1580 WEST BROADWAY, VANCOUVER, B.C., V6J 5K8, PHONE: (604) 713-5000  
www.vsb.bc.ca

**SCHOOL LOCATIONS AND BOUNDARIES**  
8th Edition

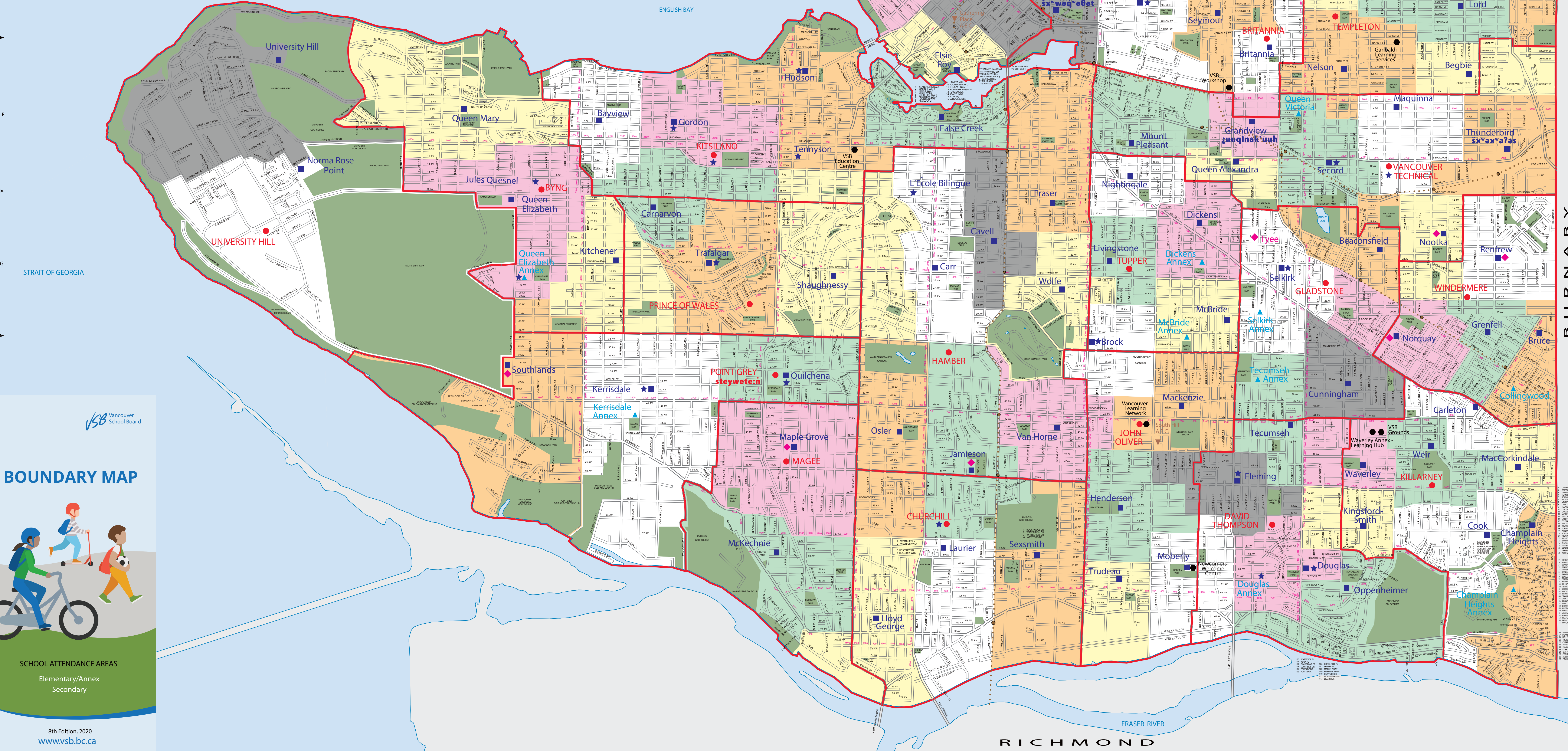
**LEGEND**

- Secondary School
- Secondary School Attendance Area Boundary
- Elementary School
- Elementary School Attendance Area
- Annex
- French Program
- Elementary District Program
- Adult Education Centre (A.E.C.)
- District Services
- Park
- Rapid Transit

SCALE  
0 0.5 1.0 km

Approved: January 22, 2001  
Revised: February 2020

This map is for reference only. To locate your school catchment, please visit: [govsb.ca/school-locator](http://govsb.ca/school-locator)



**BOUNDARY MAP**

SCHOOL ATTENDANCE AREAS  
Elementary/Annex  
Secondary

8th Edition, 2020  
[www.vsb.bc.ca](http://www.vsb.bc.ca)



ELEMENTARY SCHOOLS		SECONDARY SCHOOLS	
SCHOOL NAME	GRID	SCHOOL NAME	GRID
BAYVIEW (Bayview Community Elementary)	F5	MCBRIDE (Sir Richard McBride Elementary)	G9
BEACONSFIELD (Lord Beaconsfield Elementary)	G11	MCBRIDE (Sir Richard McBride Annex)	F4
BEGBIE (Sir Matthew Begbie Elementary)	F11	MCKECHNIE (Dr R.E. McKechnie Elementary)	I9
BRITANNIA (Britannia Community Elementary)	F10	MOBERLY (Walter Moberly Elementary)	H10
BROCK (General Brock Elementary)	H8	MOUNT PLEASANT (Mount Pleasant Elementary)	F9
BRUCE (Graham Bruce Community Elementary)	H12	NELSON (Lord Nelson Elementary)	H12
CARLETON (Sir Guy Carleton Community Elementary)	H11	NIGHTINGALE (Florence Nightingale Elementary)	F9
CARNARVON (Carnarvon Community Elementary)	G5	NOOTKA (Nootka Community Elementary)	G11
CARR (Emily Carr Elementary)	G7	NORMA ROSE POINT SCHOOL (Norma Rose Point School)	F2
CAVELL (Edith Cavell Elementary)	G8	NORQUAY (John Norquay Elementary)	H11
CHAMPLAIN HEIGHTS (Champlain Heights Community Elementary)	H2	OPPENHEIMER (David Oppenheimer Elementary)	H6
CHAMPLAIN HEIGHTS (Champlain Heights Annex)	H2	OSLER (Sir William Osler Elementary)	H7
COLLINGWOOD (Collingwood Neighbourhood School)	H12	QUEEN ALEXANDRA (Queen Alexandra Elementary)	F9
COOK (Captain James Cook Elementary)	H11	QUEEN ELIZABETH (Queen Elizabeth Elementary)	G4
CROSSTOWN (Crosstown Elementary)	E8	QUEEN ELIZABETH (Queen Elizabeth Annex)	G4
CUNNINGHAM (St T. Cunningham Elementary)	H10	QUEEN MARY (Queen Mary Elementary)	G2
DICKENS (Charles Dickens Elementary)	G9	QUEEN VICTORIA (Queen Victoria Annex)	F9
DICKENS (Charles Dickens Annex)	G9	QUESNEL (Ecole Jules Quesnel Elementary)	F4
DOUGLAS (Sir James Douglas Elementary)	H9	QUILCHENA (Quilchena Elementary)	G6
DOUGLAS (Sir James Douglas Annex)	H9	RENFREW (Renfrew Community Elementary)	G11
ELSIE ROY (Elsie Roy Elementary)	F7	ROBERTS (Lord Roberts Elementary)	E7
FALSE CREEK (False Creek Elementary)	E7	ROBERTS (Lord Roberts Annex)	E7
FRASER (Simon Fraser Elementary)	F5	SECORD (Ecole Laura Secord Elementary)	F10
FRANKLIN (Sir John Franklin Community)	E12	SELKIRK (Lord Selkirk Elementary)	G10
GORDON (General Gordon Elementary)	F5	SEKSMITH (J.W. Seksmith Community Elementary)	I8
GRANDVIEW (Grandview Elementary)	G11	SEYMOUR (Admiral Seymour Elementary)	E9
GRENFELL (Sir Wilfred Grenfell Community School)	F10	SHAUGHNESSY (Shaughnessy Elementary)	G6
HASTINGS (Hastings Community Elementary)	E11	SOUTHLANDS (Southlands Elementary)	H4
HENDERSON (John Henderson Elementary)	F8	STRATHCONA (Lord Strathcona Community Elementary)	E9
HUDSON (Henry Hudson Elementary)	F9	TECUMSEH (Tecumseh Elementary)	H10
JAMIESON (Dr Anne B. Jamieson Elementary)	H8	TECUMSEH (Tecumseh Annex)	H10
KERRISDALE (Kerrisdale Elementary)	H5	TENNYSON (Lord Tennyson Elementary)	F8
KERRISDALE (Kerrisdale Annex)	H5	THUNDERBIRD (Thunderbird Elementary)	F12
KINGSFORD-SMITH (Sir Charles Kingsford-Smith Elementary)	H9	TILLICUM (Tillicum Community Annex)	E10
KITCHENER (Lord Kitchener Elementary)	G5	TRAFALGAR (Trafalgar Elementary)	G6
LAURIER (Sir Wilfrid Laurier Elementary)	I7	TRUDEAU (Pierre Elliott Trudeau Elementary)	I9
L'ECOLE BILINGUE (L'Ecole Bilingue Elementary)	F7	TYEE (Tyee Elementary)	G10
LIVINGSTONE (David Livingstone Elementary)	G9	UNIVERSITY HILL (University Hill Elementary)	F2
LLOYD GEORGE (David Lloyd George Elementary)	H8	VAN HORNE (Sir William Van Horne Elementary)	H8
LORD (Dr A.R. Lord Elementary)	H10	WAVERLEY (Waverley Elementary)	H10
MACCORKINDALE (Dr H.N. MacCorkindale Elem)	E11	WEIR (Dr George M. Weir Elementary)	H11
MACKENZIE (Sir Alexander Mackenzie Elementary)	H9	WOLFE (General Wolfe Elementary)	G8
MAPLE GROVE (Maple Grove Elementary)	F6	XPEY	E10
MAQUINNA (Chief Maquinna Elementary)	F11		

INDIGENOUS NAMES FOR SCHOOLS With The Vancouver Board Of Education

We would like to acknowledge that the Vancouver School Board and all of our Elementary and Secondary Schools live, work and learn on the ancestral, unceded traditional lands of x'məḡk'aḡəm (Musqueam), śkwxw'wəsh (Squamish) & səliwəṭh (Tsilil-Waututh) Nations.

**Grandview**  
 ʔuqinək'uuh Elementary School  
 Meaning: Grand View  
 Language: Barkley Sound Dialect, the ancestral language of the Nučšaṇul (Nuu-Chah-nulth) people.

**Point Grey Secondary**  
 staywete:n  
 Meaning: Power from the North  
 Language: hañqamiḡah, the ancestral language of the x'məḡk'aḡəm (Musqueam) and səliwəṭh (Tsilil-Waututh) people.

**Crosstown**  
 5x'wəq'aṭəṭ  
 Meaning: The place from which one can catch the tide  
 Language: hañqamiḡah, the ancestral language of the x'məḡk'aḡəm (Musqueam) and səliwəṭh (Tsilil-Waututh) people.

**Thunderbird**  
 5x'əx'aṭəs  
 Meaning: Thunderbird  
 Language: hañqamiḡah, the ancestral language of the x'məḡk'aḡəm (Musqueam) and səliwəṭh (Tsilil-Waututh) people.

**xpey**  
 Meaning: Cedar  
 Language: hañqamiḡah, the ancestral language of the x'məḡk'aḡəm (Musqueam) and səliwəṭh (Tsilil-Waututh) people.

**VSBC VANCOUVER SCHOOL BOARD**  
 1580 WEST BROADWAY, VANCOUVER, B.C., V6J 5K8, PHONE: (604) 713-5000  
 www.vsb.bc.ca

**SCHOOL LOCATIONS AND BOUNDARIES**  
 8th Edition

**LEGEND**

- Secondary School
- Secondary School Attendance Area
- Elementary School
- Elementary School Attendance Area Boundary
- Annex
- French Program
- Elementary District Program
- Adult Education Centre (A.E.C.)
- District Services
- Park
- Rapid Transit

Approved: January 22, 2011  
 Revised: February 2020

SCALE 0 0.5 1.0 km

This map is for reference only, to locate your school catchment, please visit: govsb.ca/school-locator

